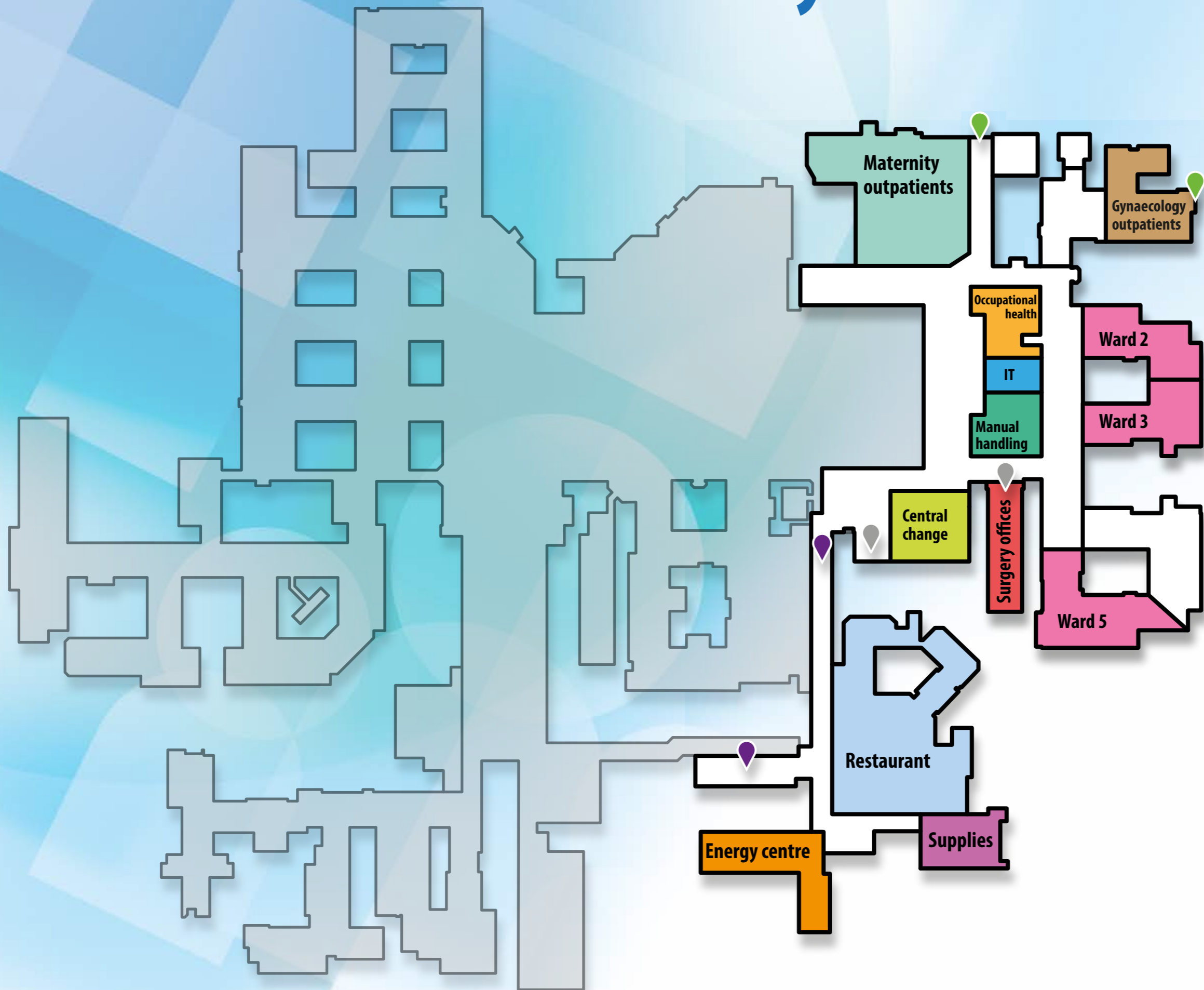


# North Tyneside General Hospital

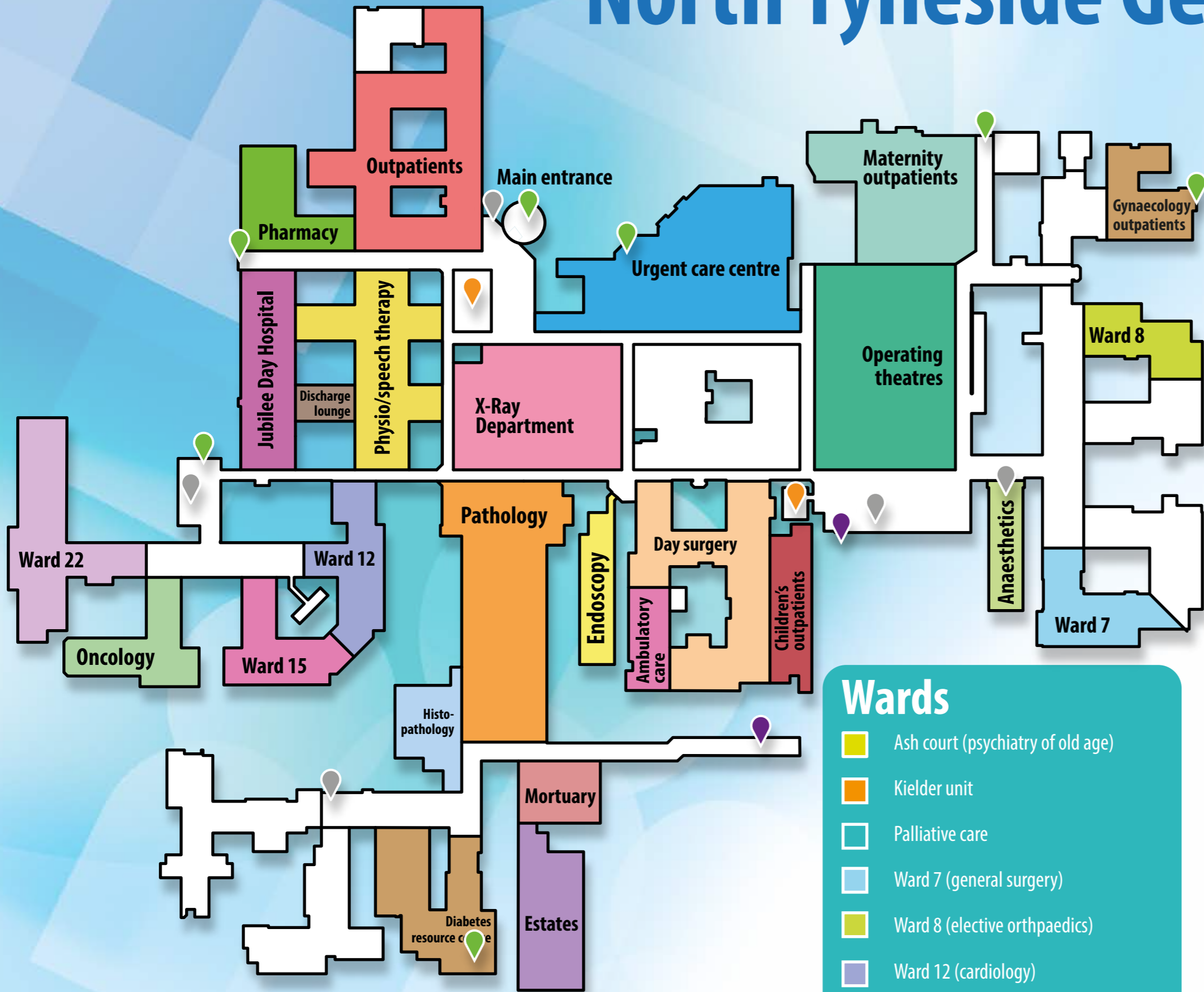
## Lower ground



### Key

- Central change
- Energy centre
- Gynaecology outpatients
- IT
- Manual handling
- Maternity outpatients
- Occupational health
- Restaurant
- Supplies
- Surgery offices
- Ward 2 (acute elderly medicine)
- Ward 3 (elderly rehabilitation)
- Ward 5 (ortho-geriatrics)
- Entrance point
- Lifts and stairs
- Ramp up to ground level

# North Tyneside General Hospital Ground floor



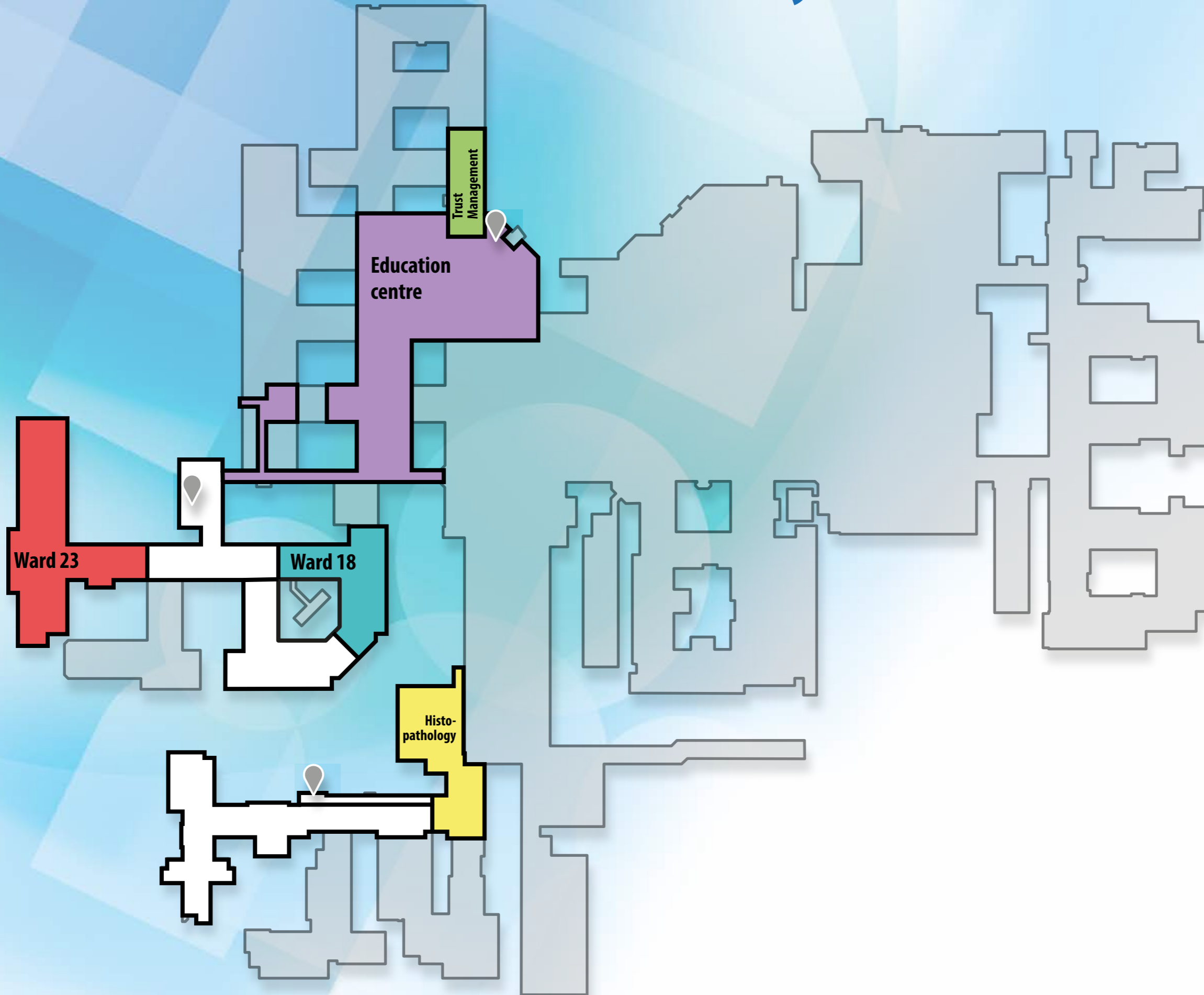
## Key

- |                          |                       |
|--------------------------|-----------------------|
| Ambulatory care          | Pathology             |
| Anaesthetics             | Pharmacy              |
| Children's outpatients   | Physio/speech therapy |
| Day surgery              | Urgent care centre    |
| Diabetes resource centre | X-ray                 |
| Discharge lounge         | Entrance point        |
| Endoscopy                | Lifts and stairs      |
| Estates                  | HVS cafes             |
| Gynaecology outpatients  | Ramp to restaurant    |

- ## Wards
- Ash court (psychiatry of old age)
  - Kielder unit
  - Palliative care
  - Ward 7 (general surgery)
  - Ward 8 (elective orthopaedics)
  - Ward 12 (cardiology)
  - Ward 15 (gastroenterology)
  - Ward 22 (stroke)

# North Tyneside General Hospital

## First floor



### Key

- Education centre
- Histopathology
- Trust management
- Ward 18 (respiratory medicine)
- Ward 23 (elderly rehabilitation)
- Lifts and stairs